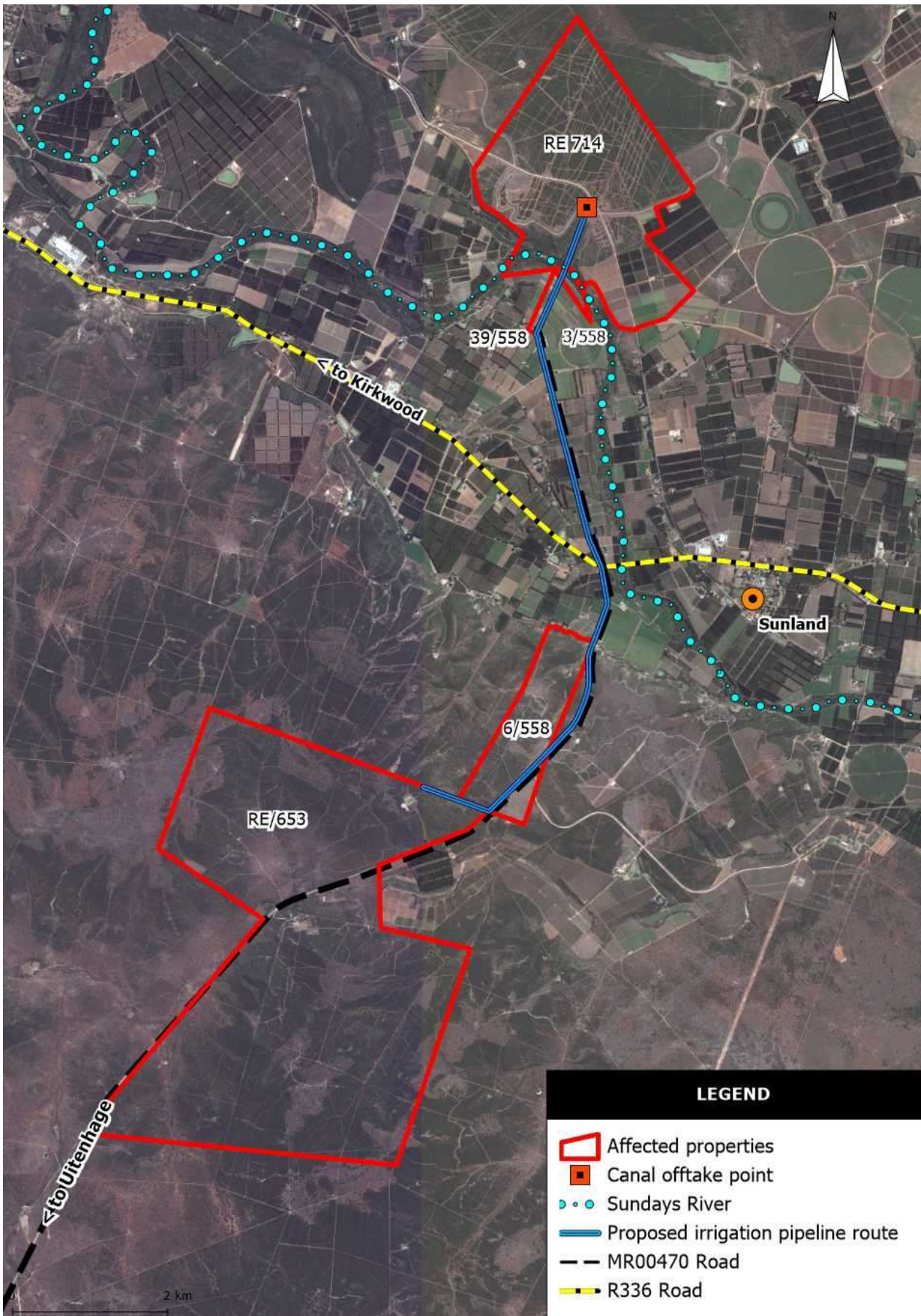


APPENDIX H: LOCALITY PLAN

The location of the area under assessment, which includes the Remainder of Farm 653 and the properties affected by the proposed irrigation pipeline corridor, are shown in the map below.



This project has a component which is a linear activity (irrigation pipeline) and thus, the cadastral information for the properties that will be affected by the irrigation pipeline, as well as the coordinates of the turning points, are provided in the table and maps below.

CO-ORDINATES OF TRIGGERING SECTIONS ALONG THE IRRIGATION PIPELINE CORRIDOR							
Triggering Sections	Point Number	Latitude (S) (DDMMSS)			Longitude (E) (DDMMSS)		
Between A and B	A	33°	28'	6.22"S	25°	36'	25.75"E
	B	33°	28'	49.33"S	25°	36'	4.42"E
Between C and D	C	33°	30'	32.50"S	25°	36'	30.36"E
	D	33°	30'	36.48"S	25°	36'	28.59"E
Between E and F	E	33°	31'	35.20"S	25°	35'	44.59"E
	F	33°	31'	26.93"S	25°	35'	17.21"E

The maps below indicate the sections of the proposed irrigation pipeline which trigger listed activities in the NEMA EIA Regulations, 2014 (as amended), as indicated in the table above.

