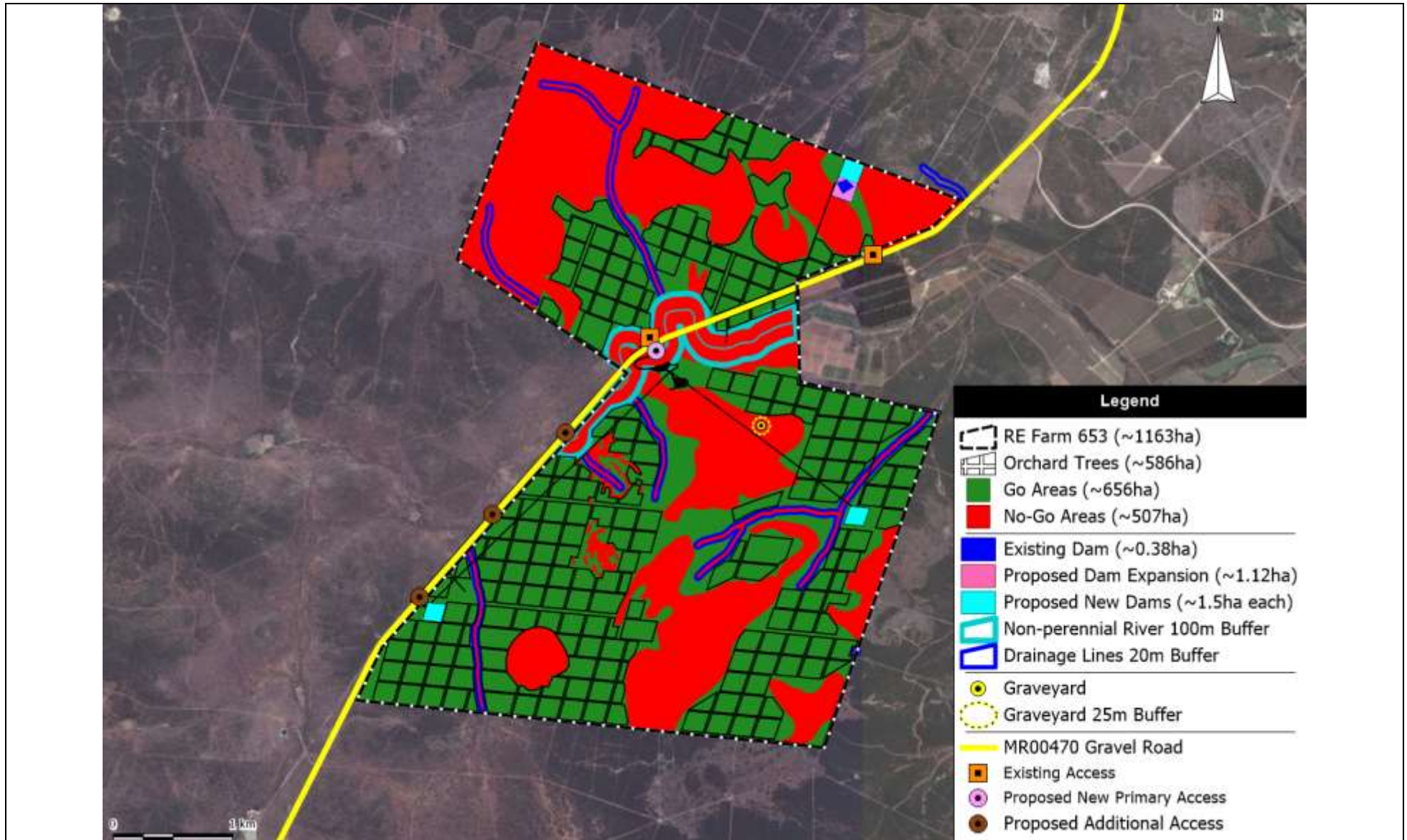


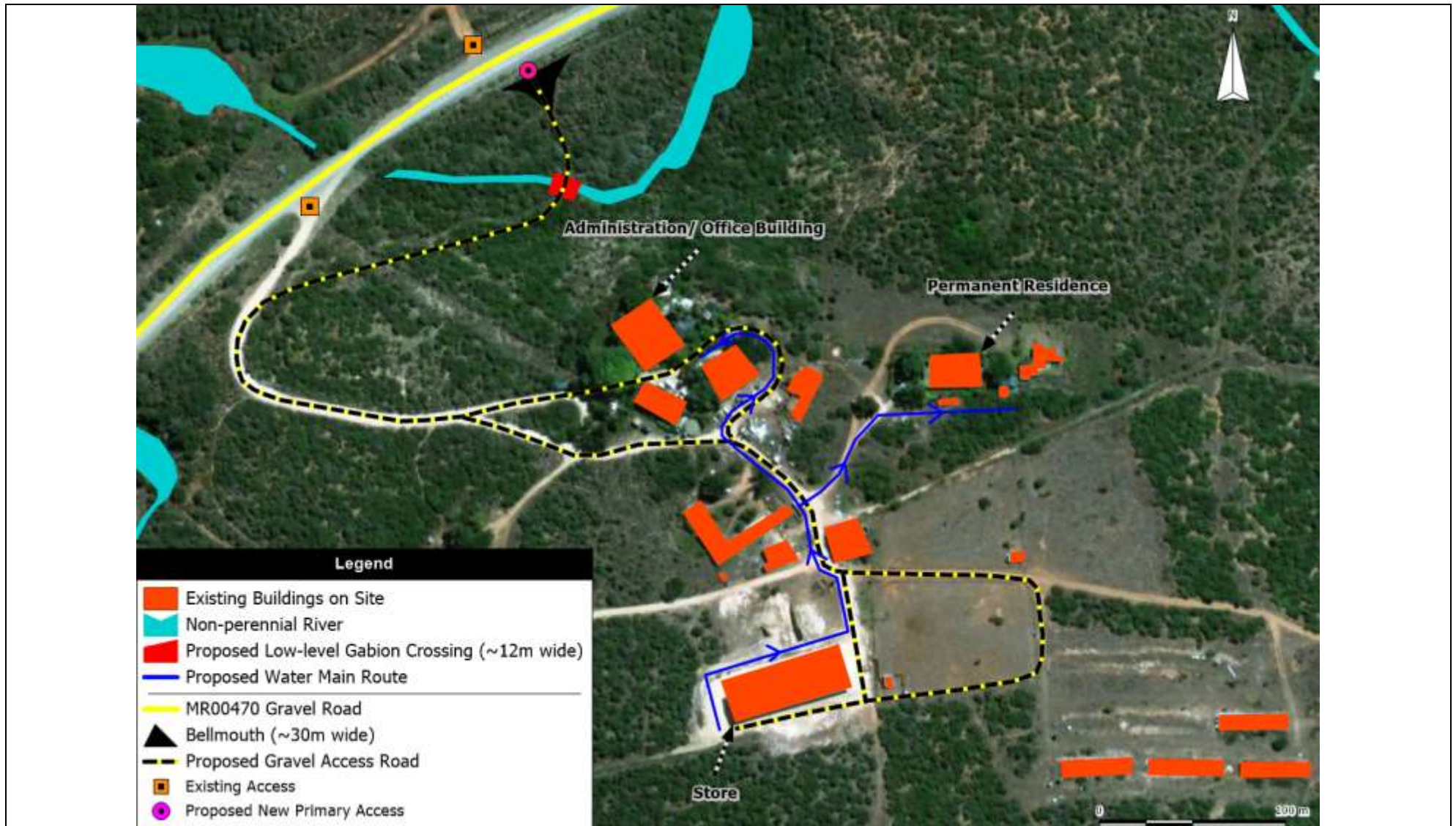
APPENDIX H: LAYOUT MAP

The preferred development footprint proposed for this assessment including the Remainder of Farm 653, as well as the properties affected by the proposed irrigation pipeline corridor, are shown in the maps below.

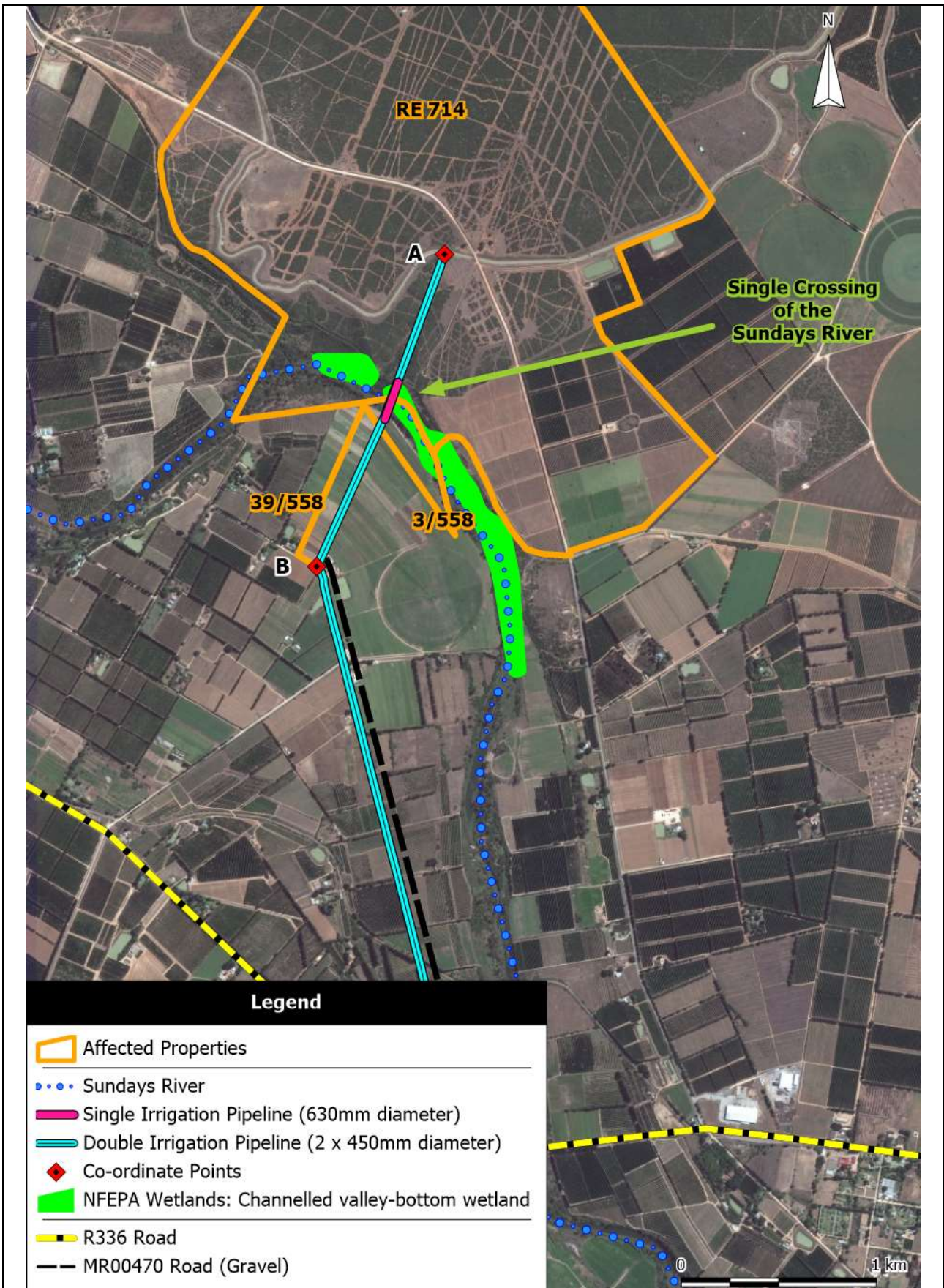
- Map 1: Preferred development footprint proposed on Farm 653.
- Map 2: Preferred logistical services area footprint proposed on Farm 653.
- Map 3: The preferred irrigation pipeline corridor proposed to be installed over private property, as well as in the road reserve of a proclaimed municipal road (North).
- Map 4: The preferred irrigation pipeline corridor proposed to be installed over private property, as well as in the road reserve of a proclaimed municipal road (South).
- Map 5: Proposed irrigation layout.



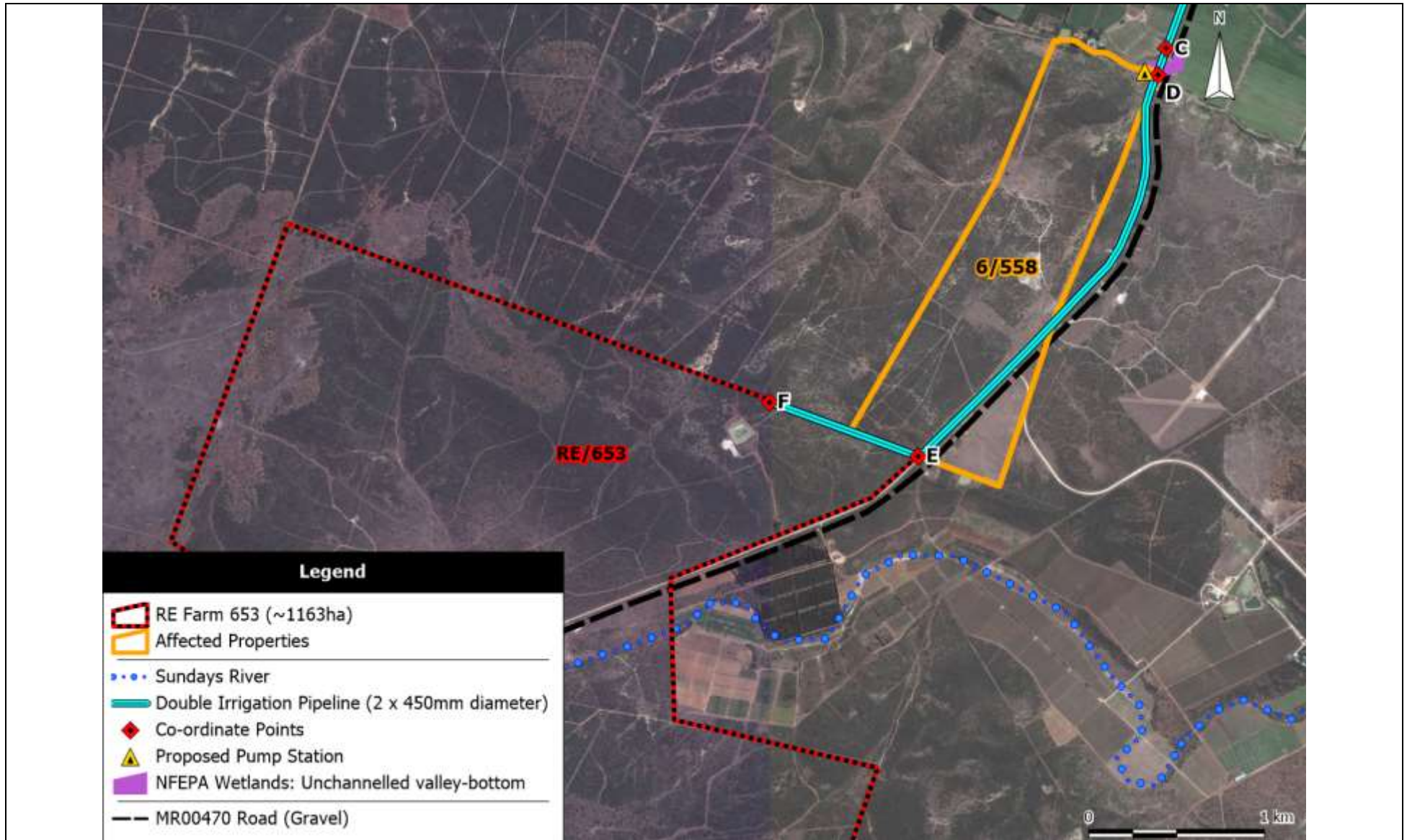
Map 1: The preferred development footprint proposed on Farm 653.



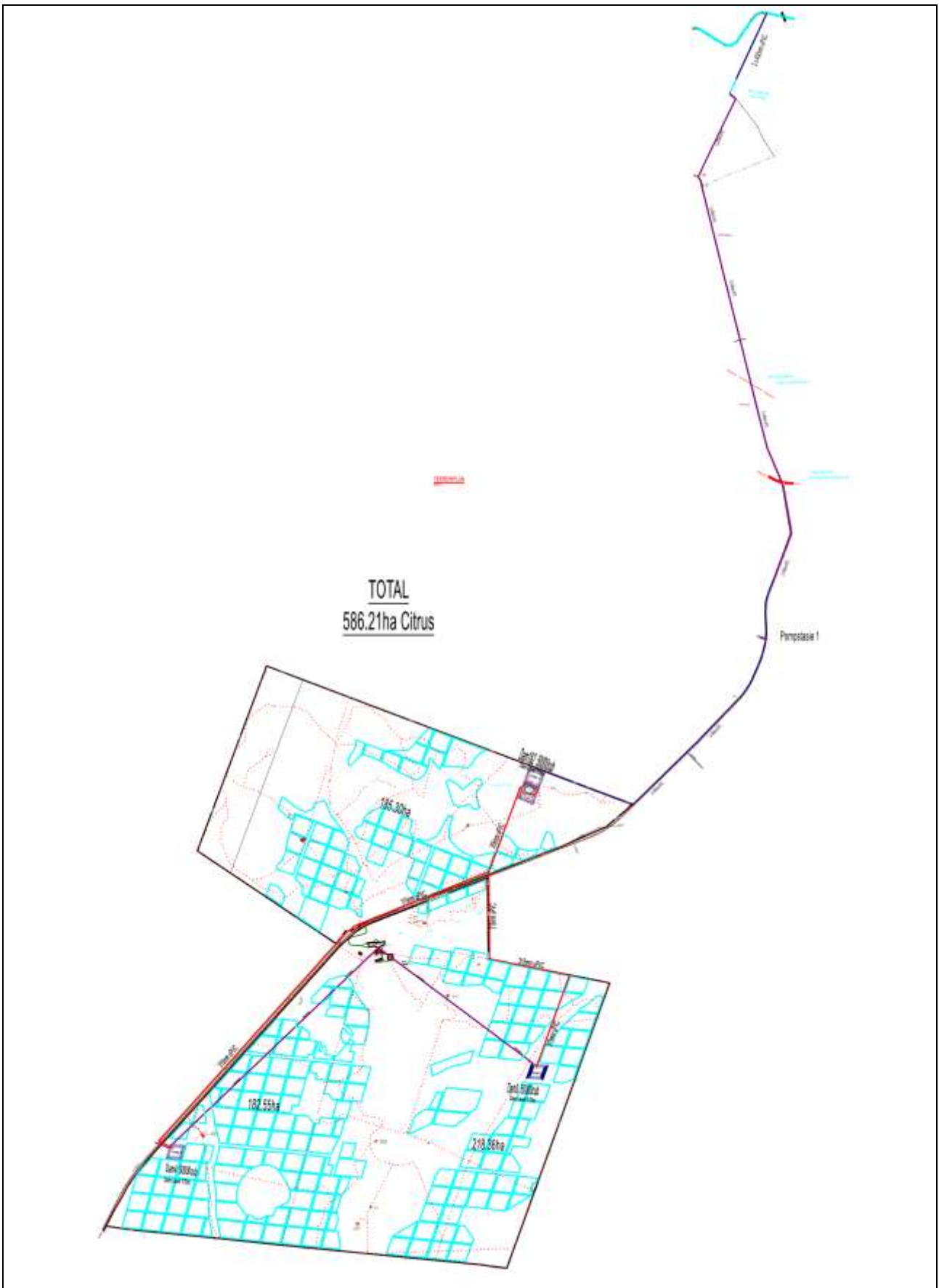
Map 2: The preferred logistical services area footprint proposed on Farm 653.



Map 3: The preferred irrigation pipeline corridor proposed to be installed over private property, as well as in the road reserve of a proclaimed municipal road (North).



Map 4: The preferred irrigation pipeline corridor proposed to be installed over private property, as well as in the road reserve of a proclaimed municipal road (South).



Map 5: Proposed irrigation layout.